

Edge Airport France



Strategic
Partner

Table of Contents

FiDS- Flight Information Display System
Flight Information Display System
Overview
Advantages
Flight control panel
Individual control panel
Examples of presentation
Flight arrivals information
Passenger guidance information
Check-in display for South African (SA)
Check-in display default template
Integration of Airport Manager FiDS with SSSP Samsung
Samsung Smart Signage Platform
Easy installation with a ready-to-use solution
SuperVision FiDS
Example of supervision FiDS screen
Edge Airport France

FiDS- Flight Information Display System



Flight Information Display System

- Flight Management:
 - seasonal flight schedules;
 - daily expected flight lists;
 - display all updates in real-time.
- Display functions:
 - domestic and international flight lists;
 - distribution of flights by information area in the airport;
 - customized display for airlines;
 - multimedia animations;
 - exporting flight information to be displayed on airport website (format XML et HTML).
- System management:
 - zoning and allocation of screens;
 - monitoring display screens remotely using FiDS Supervision.

Overview

Airport Manager FIDS is a user-friendly flight information display system based on **HTML5** technology. It can be delivered with other modules of "Airport Manager" suite such as local-DCS, Cupp-T and aeronautical billing software.



Advantages

Improving the passenger experience by providing the accurate flight information in real time :
passenger service with accurate flight information:

- multilingual displays including Chinese, Arabic, French, English, etc.;
- exports flight information on airport website;
- facilitates system management by using supervision functions;
- reducing operating costs using automatically switching ON and OFF screens;

Flight control panel

- flight information (delayed, cancelled, etc.);
- arrival information (hall, baggage belt)
- departure information (check-in, gates, etc.).

Individual control panel

- sleep mode
- baggage belt, check-in, boarding
- flight arrivals and departures lists;
- sequence mode (selecting pages to be displayed in a loop);
- multimedia mode (broadcasting of videos or animations in internet format)

Examples of presentation

Flight arrivals information

Here is a sample FIDS deployed in Abidjan. It shows the planned flights in the evening and the first flight on the next day.

AERIA		ARRIVEE	08-02-2016 18:41
20:20	HP 026	SAN PEDRO	
22:35	TK 961	ISTANBUL (ATATURK) / COTONOU	
22:50	HP 513	LOME	
Mardi 9 Février 2016			
00:50	AT 523	CASABLANCA	
09:15	MR 971	BEYROUTH / LAGOS	
10:35	23 907	OUIAGADDUGOU / BOBO DIOLASSO	
11:40	4Q 520	NAIROBI	
14:25	9K 797	DUBAI / ACCRA	
15:20	6T 667	ADDIS ABABA / LOME	
16:15	9K 385	BRUXELLES	

Passenger guidance information

In this example that is used in Pointe Noire, passengers are advised to follow one of three corridors leading to the boarding.



Check-in display for South African (SA)

FIDS allows to completely personalize the displays by airline company. It is possible to insert background images, video, scrolling text about flight information.



Check-in display default template

When there are no images or any special instructions provided by airlines, here is what is displayed by default:



Integration of Airport Manager FIDS with SSSP Samsung

Samsung Smart Signage Platform

The SSSP platform provides all-in-one solution that integrates a media player and PC with display

management software. Equipped with powerful quad-core embedded System-on-Chip (SoC), the 2nd Generation Samsung Smart Signage Platform (SSSP) is much more enhanced with robust functionalities than ever.



An **all-in-one solution** to offer a new display experience.

The “Samsung Smart Signage Platform” (SSSP) display solution is integrated in Samsung monitors, offering the power of a quad-core processor to use our different display solutions.

This new feature eliminates the need for an external PC while reducing the constraints of installation and maintenance. Using our FIDS, you can create, plan, and deploy your content effortlessly

Multiple types of content can be displayed simultaneously and continuously through quad-core processor, and 8GB to 16GB of storage.



Easy installation with a ready-to-use solution

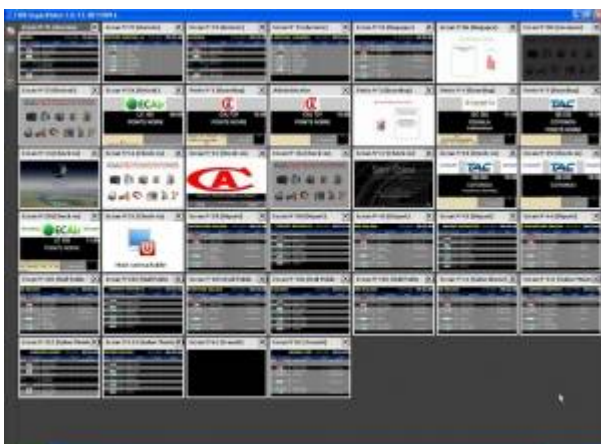
By integrating the media player into our solutions, SSSP technology allows for simple product integration and eliminates the costs of heavy installation. Finally, you no longer need an external PC or display software, which represents a real saving on your management fees and the purchase of the monitor.

- stop / start;
- reboot;
- online indication;
- visualisation temps réel ;
- CUP and RAM usage;
- Programmable switch ON/ OFF times(1) ;
- remote control function(1) ;
- command line support(2)

(1) Solely on SOC Samsung technolog.

(2) Solely on Windows Player.

Example of supervision FIDS screen



SuperVision allows administration of several platforms. It can be used in two modes for Edge-airport solutions:

- supervision of the Cupp-T system (IATA CUPPS platform);
- supervision for FiDS , flight information display system.

From:

<https://edgeairport.alwaysdata.net/wiki/> - **Documentation Embross (ex Edge Airport)**

Permanent link:

<https://edgeairport.alwaysdata.net/wiki/doku.php?id=en:solutions:fidsmenu:presentation&rev=1504795659>

Last update: **07/09/2017 16:47**

Edge Airport France

Airport Manager Solutions

Phone: +33 553 801 366

Service commercial : contact@edge-airport.com

Support technique : support@edge-airport.com

Edge Airport France SAS au capital de 150 000 €

RCS Bergerac 529 125 346 Les Lèches TVA : FR53529125346 / EORI : FR52912534600039

Tel : +33(0)553 801 366 contact@edge-airport.com www.edge-airport.com