

Cupp-T - IATA CUPPS Platform

Edge Airport France

Table of Contents

Cupp-T - IATA CUPPS Platform

IATA CUPPS Platform

 Common Use Passenger Processing Technology

 General

 Simple to Use Interface

 Features

 Configuring Peripherals

 Naming standard of peripherals as per IATA/CUPPS norm

 Competitive opening

 Example of ALTEA

SuperVision

Supervision Station

Edge Airport France

Cupp-T - IATA CUPPS Platform



IATA CUPPS Platform

Common Use Passenger Processing Technology

IATA recommended practice 1797

- Security:
 - authentication of the users;
 - only applications authorized by the platform can be run;
 - secure access to printers, boarding card readers and other peripherals.
- Interoperability & compatibility:
 - portable applications Load and Play (LnP);
 - web hosted applications;
 - permits the use of peripherals without proprietary firmware.
- IATA / CUPPS certified

General

Cupp-T is a high-performance platform which facilitates airlines, ground handlers or other operators to share common physical check-in, gate or back and front-office positions, and the associated peripherals, improving the efficiency of airport resources.

Airport Manager Cupp-T supports any CUPPS compliant application including but not limited to:

- DCS (Departure Control System) for airlines;
- Local-Departure Control System like Airport Manager L-DCS;
- Back office Applications;
- Other Operational Applications.

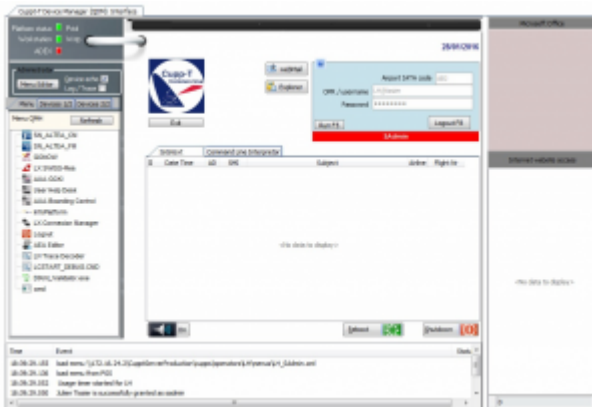
Certified to IATA / CUPPS version 01.03 revision 9.

Supports the all major DCS for airlines:

- ALTEA ©Amadeus
- GAETAN ©Air France
- Lufthansa Cute Future ©Brussels Airlines
- MACS © Emirates
- TROYA © Turkish Airlines
- Local DCS Airport Manager used by Air Corsica and many lowcost airlines like Ryanair, flyBE, Transavia, EasyJet, etc

- all DCS applications conforming to the IATA / CUPPS norm.

Simple to Use Interface



Cupp-T: A modern and secure interface. In secure mode, only administrators have access to 'Windows' desktop.

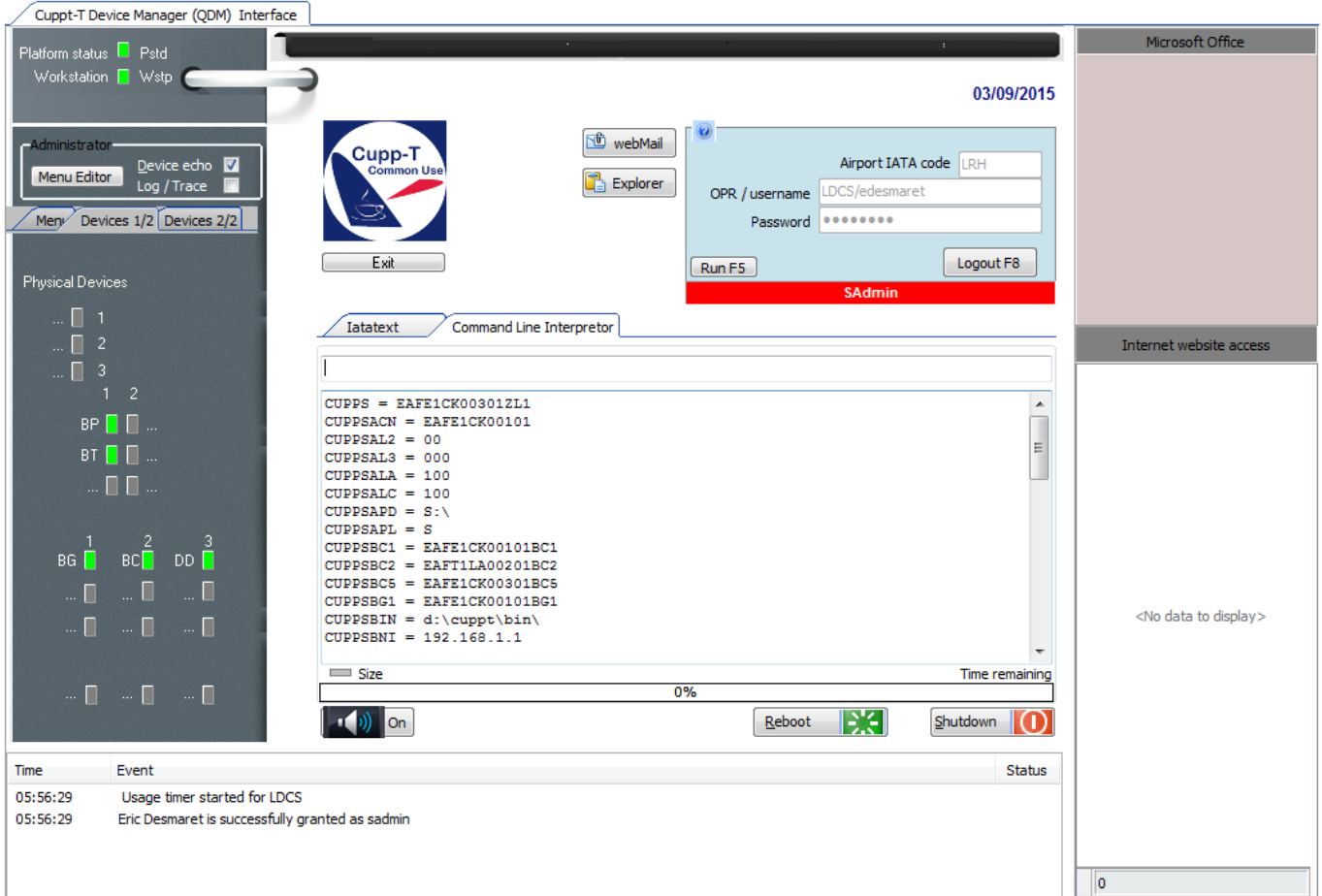
Features

In addition to hosting airline applications, Cupp-T offers advanced functions:

1. launching Microsoft office applications – Word, Excel, PowerPoint, etc.;
2. controlled access to a list of websites defined by the system administrator;
3. dynamic creation of multiple menus per operator and per user group;
4. controlled access to webmail;
5. configuring devices in just a few clicks.

Configuring Peripherals

Cupp-T allows system administrator to manage the devices.



The screenshot displays the Cuppt-T Device Manager (QDM) Interface. At the top left, it shows 'Platform status' with 'Pstd' and 'Workstation' indicators. A date '03/09/2015' is displayed in the top right. A login window is open, showing 'Airport IATA code' as 'LRH', 'OPR / username' as 'LDCS/edesmaret', and 'Password' masked with dots. Below the login window is a red bar with 'SAdmin'. A 'Command Line Interpreter' window shows the following configuration variables:

```

CUPPS = EAFE1CK003012L1
CUPPSACN = EAFE1CK00101
CUPPSAL2 = 00
CUPPSAL3 = 000
CUPPSALA = 100
CUPPSALC = 100
CUPPSAFD = S:\
CUPPSAPL = S
CUPPSBC1 = EAFE1CK00101BC1
CUPPSBC2 = EAF11LA00201BC2
CUPPSBC5 = EAFE1CK00301BC5
CUPPSBG1 = EAFE1CK00101BG1
CUPPSBIN = d:\cuppt\bin\
CUPPSBNI = 192.168.1.1
    
```

At the bottom left, a 'Physical Devices' panel lists various devices with status indicators (e.g., BP, BT, BG, BC, DD). At the bottom right, a log window shows events:

Time	Event	Status
05:56:29	Usage timer started for LDCS	
05:56:29	Eric Desmaret is successfully granted as sadmin	

Naming standard of peripherals as per IATA/CUPPS norm

BP	Boarding Pass Printer	MS	Magnetic Swipe reader
BT	Bag Tag Printer	OC	Optical Character reader
BG	Boarding Gate reader	PR	Document Printer
BC	Bar Code Reader		
DD	Display Device		

The configuration of a device takes a few clicks using the following window:



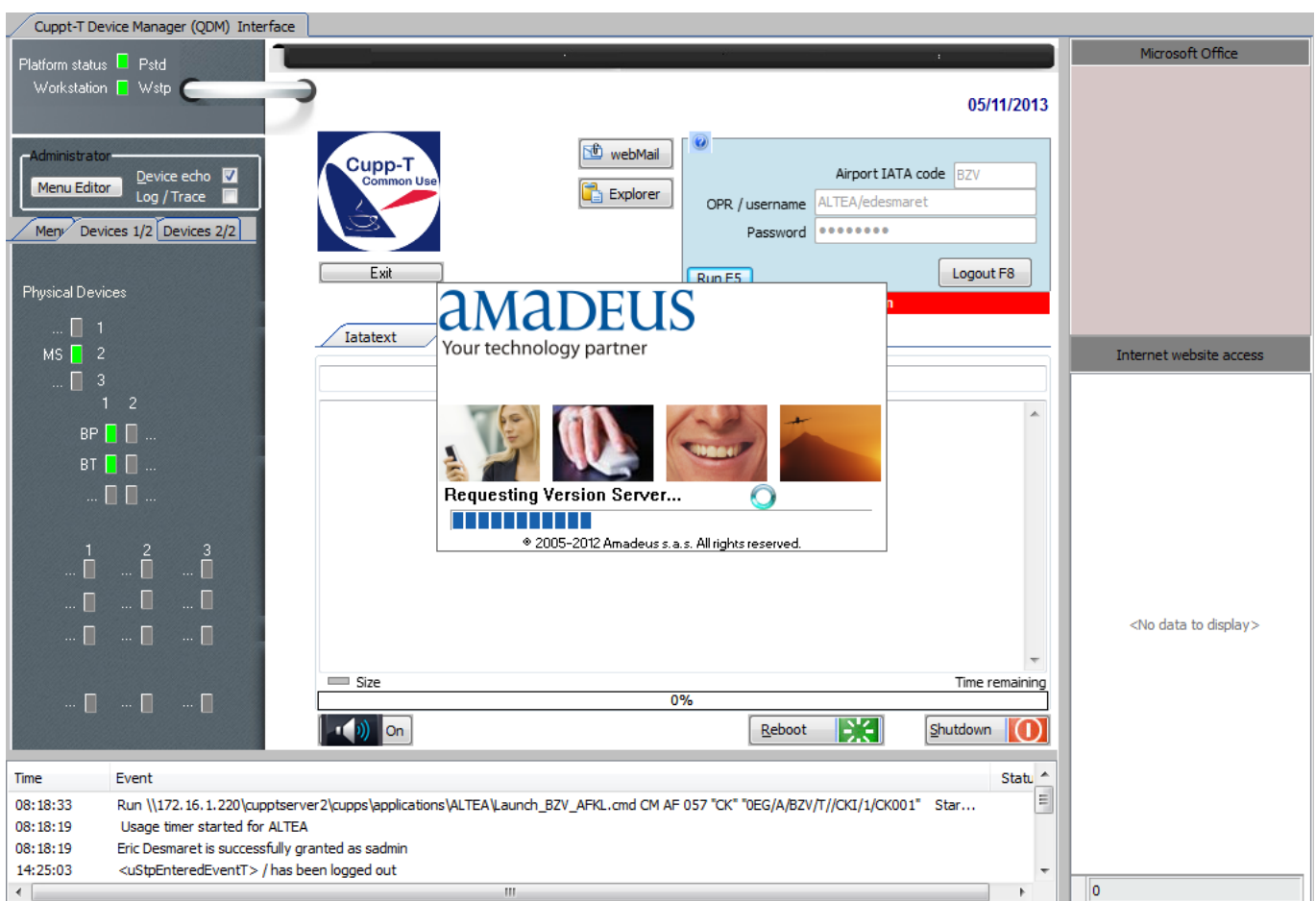
Just select a vendor and model from the list of CUPPS certified hardware to add or replace a device (Boarding pass or boarding tag printer, passport reader, magnetic card reader, etc.).

Competitive opening

Cupp-T **does not use proprietary firmware** for the devices. Thus, when the hardware needs to be replaced, the airport management has the full freedom of choice for any device vendor or model they intend to buy.

Example of ALTEA

In the example below, the departure control application “ALTEA DC” is launched by Cupp-T.



SuperVision



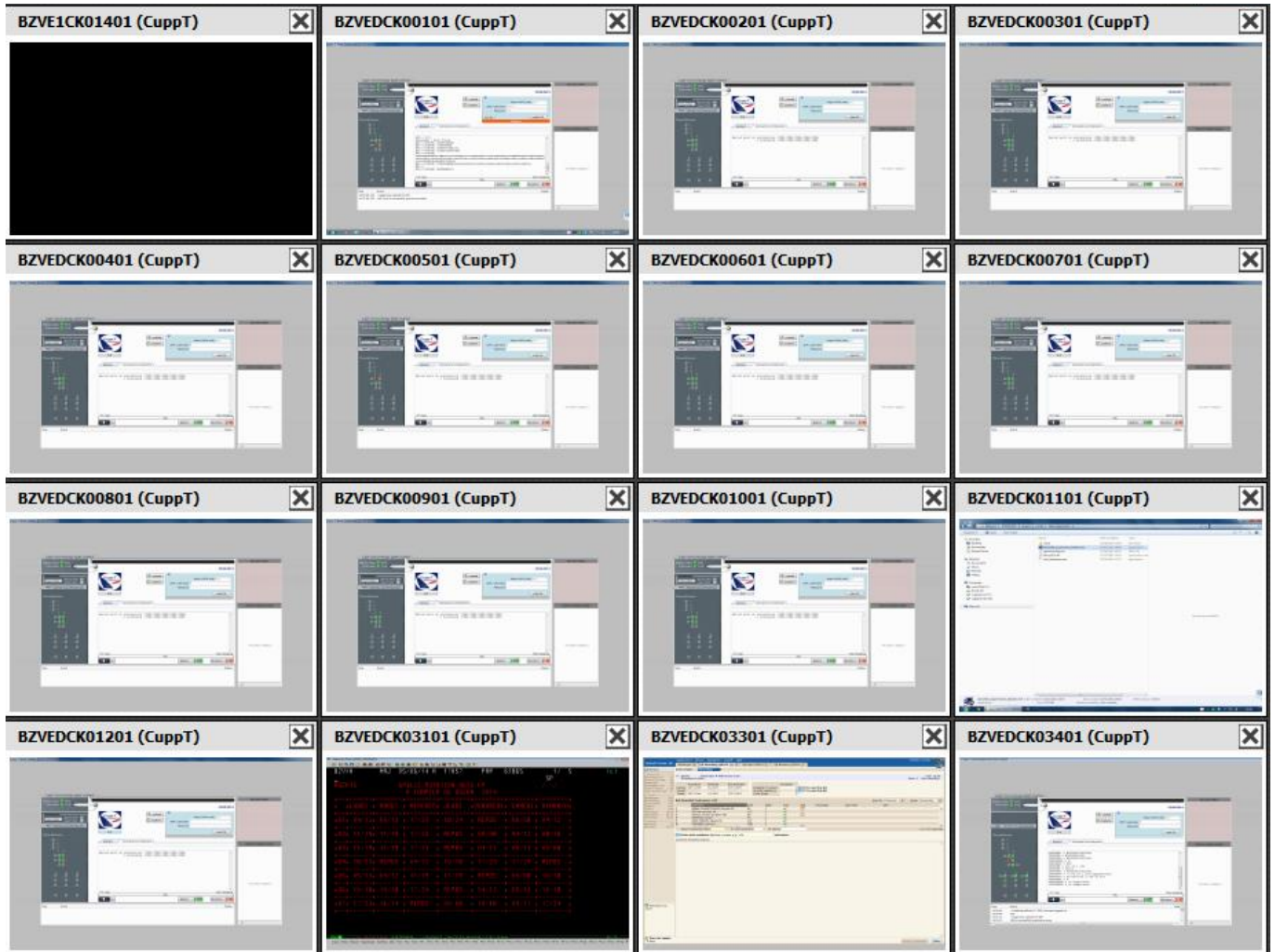
Supervision Station

In Back Office, SuperVision allows IT staff to monitor the correct functioning of each workstation and running applications on Cupp-T platform. workstation.

The tool can take control of each screen and complete the following operations:

1. stop;
2. restart;
3. remote control for technical support and training purposes;
4. monitoring of
5. processes and memory resources

Example of CUPPS



SuperVision allows administration of several platforms. It can be used in two modes for Edge-airport solutions:

1. supervision of the Cupp-T system (IATA CUPPS platform);
2. supervision for FiDS , the flight information display system.

From:

<https://edgeairport.alwaysdata.net/wiki/> - **Documentation Embross (ex Edge Airport)**

Permanent link:

<https://edgeairport.alwaysdata.net/wiki/doku.php?id=en:solutions:cuppt&rev=1504794938>

Last update: **07/09/2017 16:35**

Edge Airport France

Airport Manager Solutions

Phone: +33 553 801 366

Service commercial : contact@edge-airport.com

Support technique : support@edge-airport.com

Edge Airport France SAS au capital de 150 000 €

RCS Bergerac 529 125 346 Les Lèches TVA : FR53529125346 / EORI : FR52912534600039

Tel : +33(0)553 801 366 contact@edge-airport.com www.edge-airport.com