

# **Supervision : User Guide**

**Edge Airport France**



# Table of Contents

**Supervision : User Guide** .....

**Introduction** .....

*Objective* .....

*Description of the user interface* .....

**Viewing the display devices** .....

*Displaying device content* .....

*Removing screensMosaic* .....

**Managing zones** .....

*Turning on devices within a zone* .....

*Restarting devices in a zone* .....

*Switching off devices in a zone* .....

*Adding the area* .....

        Creating a parent area .....

        Creating a child area .....

*Changing the placement of a zone* .....

**Managing the devices** .....

*Turning on A device* .....

*Restarting a device* .....

*Turning off a device* .....

*Viewing display of the devices* .....

*Programming on/off times of samsung soc screens* .....

*Adding a device* .....

        Adding a samsung soc screen .....

        Adding a computer .....

*Changign the device* .....

*Deleting a device* .....

**Edge Airport France** .....



# Supervision : User Guide



## Introduction

### Objective

Edge Supervision allows real-time visualization of what is being displayed on the screen allowing you to supervise all of the workstations and the display systems. This mosaic, fully configurable, allows users to view live all the connected PCs and screens and set the thumbnail view to regroup stations by function, location, type. It is also possible to take control of each screen remotely, independently of the others, in order to perform a manual action if necessary.



### Description of the user interface



- All actions are possible
- 2 actions are possible: Power Off and Edit Schedule
- Only 1 action is possible: Power On

## Viewing the display devices

### Displaying device content

- Click Show All on the menu bar.



- A mosaic of contents appears on the screen.



## Removing screensMosaic

- Click Hide All on the menu.



## Managing zones

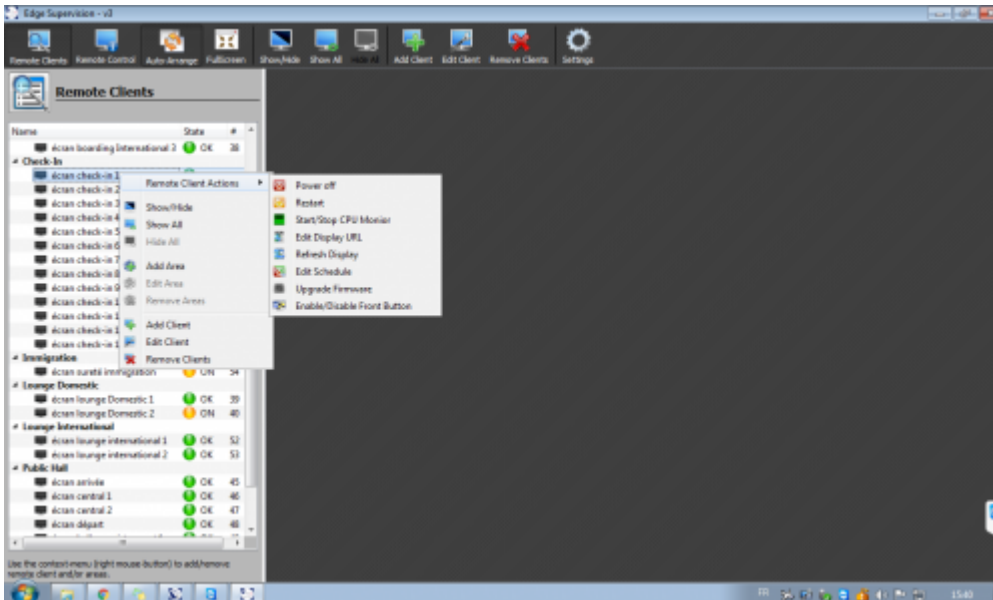
### Turning on devices within a zone

- Right click on the name of the zone to be switched on.
- Position the mouse on Remote Client Actions.
- Click on Power on in the context menu.



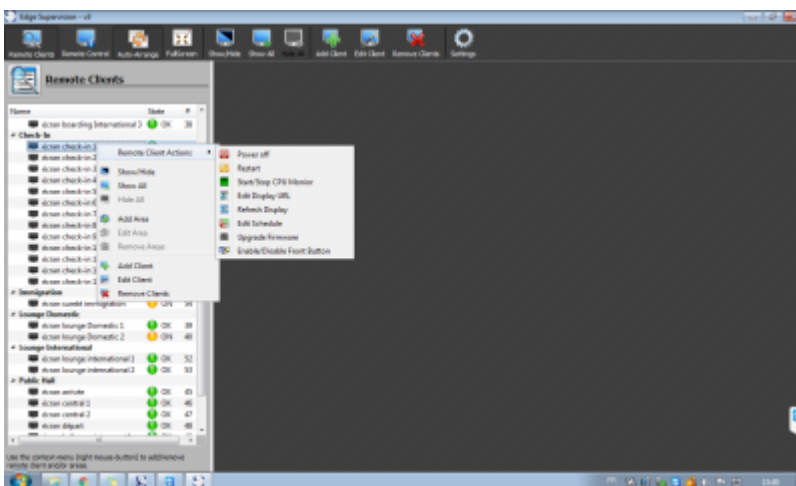
## Restarting devices in a zone

- Right-click on the name of the zone to be restarted.
- Position the mouse on Remote Client Actions in the menu which appears
- Click on Restart in the context menu.



## Switching off devices in a zone

- Right-click on the name of the zone to be switched off.
- Position the mouse on Remote Client Actions.
- Click on Power off in the context menu.



## Adding the area

- Right-click in the screen area.
- Click on Add Area in the menu that appears.



- Enter name for a new zone in the Name field of the **Dialog** window.



## Creating a parent area

- Click on/in the Dialog window:



- Click on OK to confirm.

## Creating a child area

A child area is a zone that is dependent on another zone.

- Click on one of the existing zones.



- Click on OK to confirm.

## Changing the placement of a zone

- Right-click in the area you want to change.
- Click Edit Area in the context menu.



- The **Dialog** window opens:

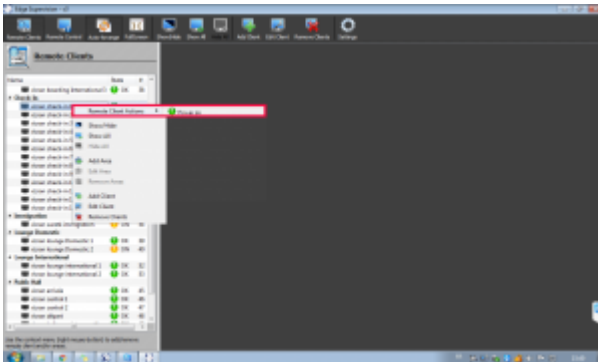


- Type the new name of the zone in the Name field.
- Click on the Parent Area dropdown arrow to change its location.
- Click OK to confirm.

# Managing the devices

## Turning on A device

- Right-click on the device to be switched on.
- Position the mouse on Remote Client Actions.
- Click Power on in the context menu.



## Restarting a device

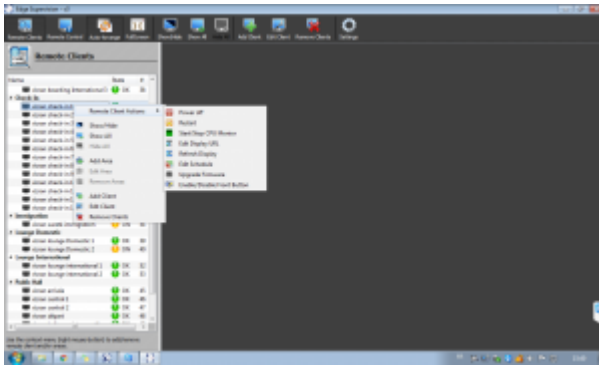
- Right-click on the device to be restarted.
- Position the mouse on Remote Client Actions in the menu which appears
- Click on Restart in the context menu.



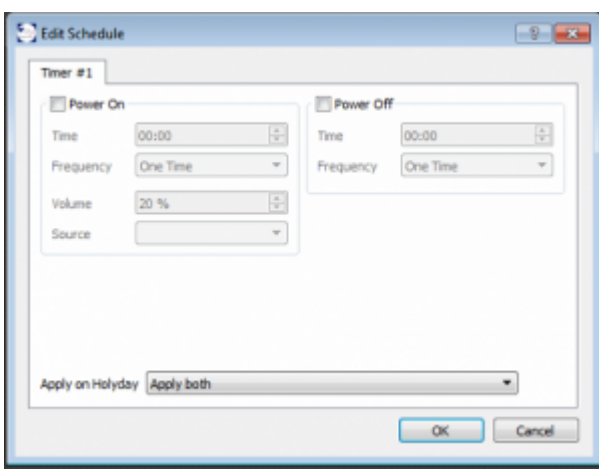
## Turning off a device

- Right-click on the device to be switched off.
- Position the mouse on Remote Client Actions in the menu which appears.
- Click on Power off in the context menu.





- Click on Edit Schedule in the contextual menu.
- The Edit Schedule window opens.



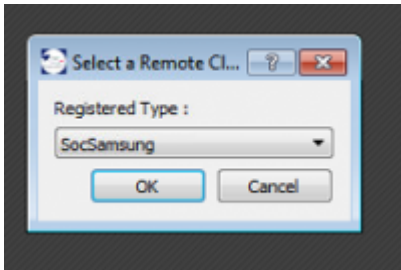
- Check mark the Power On to set the time at which the device should turn on.
- Fill out the fields below.
- Check mark the Power Off box to set the time at which the device should turn off.
- Fill out the fields below.
- Click OK to confirm.

## Adding a device

- Right-click on the screen area.
- Click on Add Client in the menu that appears.



- The Select a Remote Client window opens:

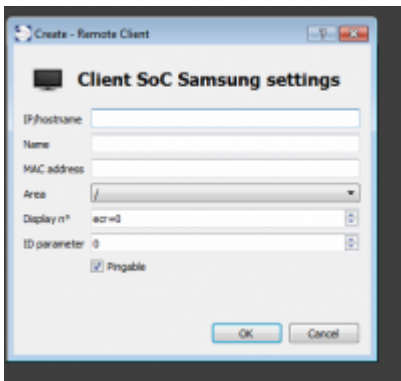


## Adding a samsung soc screen

- Click on SoC Samsung in the Select a Remote Client window.



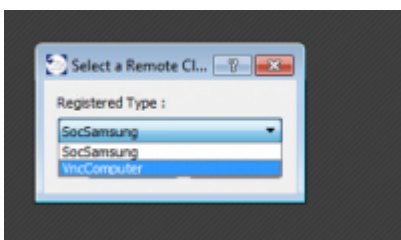
- The Remote Client window opens:



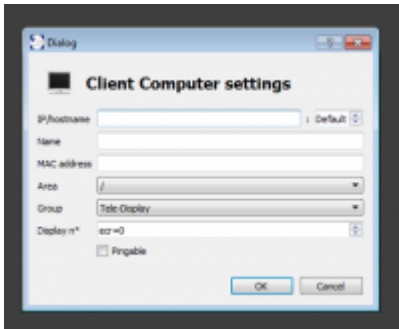
- Complete the fields.
- Click OK to confirm.

## Adding a computer

- Click on VncComputer in Select a Remote Client window.



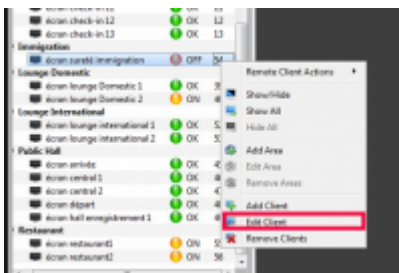
- Click on OK.
- The Dialog window opens :



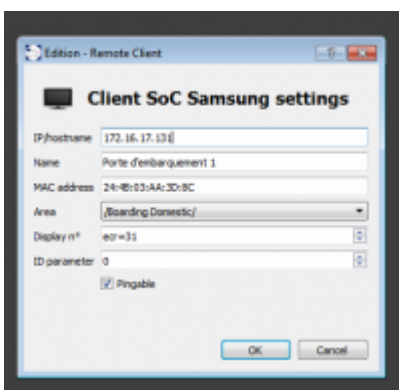
- Complete the fields.
- Click OK to confirm.

## Change the device

- Right click on the device to be edited.
- Click on Edit Client in the menu which appears.



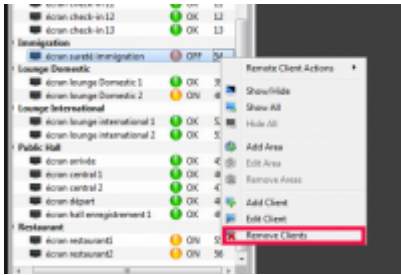
- The Remote Client window opens :



- Modify the necessary fields.
- Click OK to confirm.

## Deleting a device

- Right-click on the screen area.
- Click on Remove Client in the menu which appears.



= End of the user manual. =

From:

<https://edgeairport.alwaysdata.net/wiki/> - **Documentation Embross (ex Edge Airport)**

Permanent link:

<https://edgeairport.alwaysdata.net/wiki/doku.php?id=en:guides:utilisation:supervision> 

Last update: **29/03/2017 15:30**

# **Edge Airport France**

## **Airport Manager Solutions**

**Phone: +33 553 801 366**

**Service commercial : [contact@edge-airport.com](mailto:contact@edge-airport.com)**

**Support technique : [support@edge-airport.com](mailto:support@edge-airport.com)**

**Edge Airport France SAS au capital de 150 000 €**

**RCS Bergerac 529 125 346 Les Lèches TVA : FR53529125346 / EORI : FR52912534600039**

**Tel : +33(0)553 801 366 [contact@edge-airport.com](mailto:contact@edge-airport.com) [www.edge-airport.com](http://www.edge-airport.com)**