

# **RMS - Resource Management System**

**Edge Airport France**



---

# Table of Contents

**RMS - Resource Management System** .....  
**Edge Airport France** .....



# RMS - Resource Management System

Airport Manager Solutions



**RMS**  
Resource Management System  
Airport Resource Planning and Scheduling



## It's about smooth Passenger Experience

To keep passengers happy – while coping with rising air travel demand – your airport needs to operate at the highest level of efficiency at all times. This means ensuring optimal use of resources like aircraft parking stands, check-in counters, gates, baggage belts, tow trucks, passenger and crew buses etc. An inefficient use of these resources may lead to avoidable delays and increased costs.

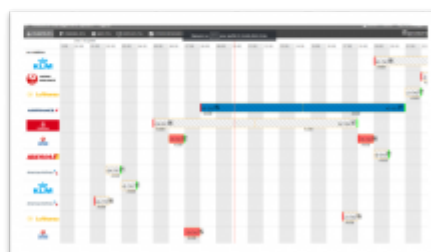
Airport Manager RMS is a powerful decision making tool to streamline airport operations by ensuring the accurate allocation of required resources at the right time and place. It gathers real-time flight information and resource information from other applications to provide a scheduling interface for resource planners on a day-to-day basis. Due to its open architecture, it is directly connected to AODB and can easily be interfaced with external systems.



Optimise Resources  
 Deliver Performance  
 Cut Operating Costs

## Quick Features

- > Advance scheduling of resource allocations for short and long term.
- > Real-time information sharing to speed up turnaround efficiency.
- > Apron management to ease aircraft congestions and flight delays.
- > Dynamic allocation of check-in desks and boarding gates.
- > Automatic assignment of incoming flights to baggage carousels.
- > Seamless integration with flight scheduler including automatic adaptation of manual entries to the flight display.
- > Rules management engine allowing users to configure the resource assignment rules.
- > Manage allocation and usage of CUPPS for airlines.
- > Graphical interface for intuitive display of resource assignments.
- > No limitations in resources, rules and constraints
- > Automatic, rule-based conflict identification and resolution.
- > Easy integration into existing or legacy system environments.
- > Accurate resource utilisation information for billing.
- > Historical reports generation for Audits , KPIs, budgets, etc.



## Contact Us

For further information on Airport Manager RMS, please contact +33 553 801 366 or email [contact@edge-airport.com](mailto:contact@edge-airport.com)

From:

<http://edgeairport.alwaysdata.net/wiki/> - **Documentation Embross (ex Edge Airport)**

Permanent link:

<http://edgeairport.alwaysdata.net/wiki/doku.php?id=en:solutions:rms>



Last update: **29/01/2018 16:34**

# **Edge Airport France**

## **Airport Manager Solutions**

**Phone: +33 553 801 366**

**Service commercial : [contact@edge-airport.com](mailto:contact@edge-airport.com)**

**Support technique : [support@edge-airport.com](mailto:support@edge-airport.com)**

**Edge Airport France SAS au capital de 150 000 €**

**RCS Bergerac 529 125 346 Les Lèches TVA : FR53529125346 / EORI : FR52912534600039**

**Tel : +33(0)553 801 366 [contact@edge-airport.com](mailto:contact@edge-airport.com) [www.edge-airport.com](http://www.edge-airport.com)**